

# ***ALL HELICOPTERS AND UAV's (Drones)***

## ***REQUIRES A PRE LANDING AND OPERATION APPROVAL***

Sirromet Mount Cotton Winery is a privately owned vineyard located to the NE of Mount Cotton. Patrons are encouraged to arrive by their own or chartered helicopter any time during daylight hours.

Sirromet Wines has a PRIVATE HLS and needs approval at all times, also no operation of any Drones or UAV's without approvals and required licenses.

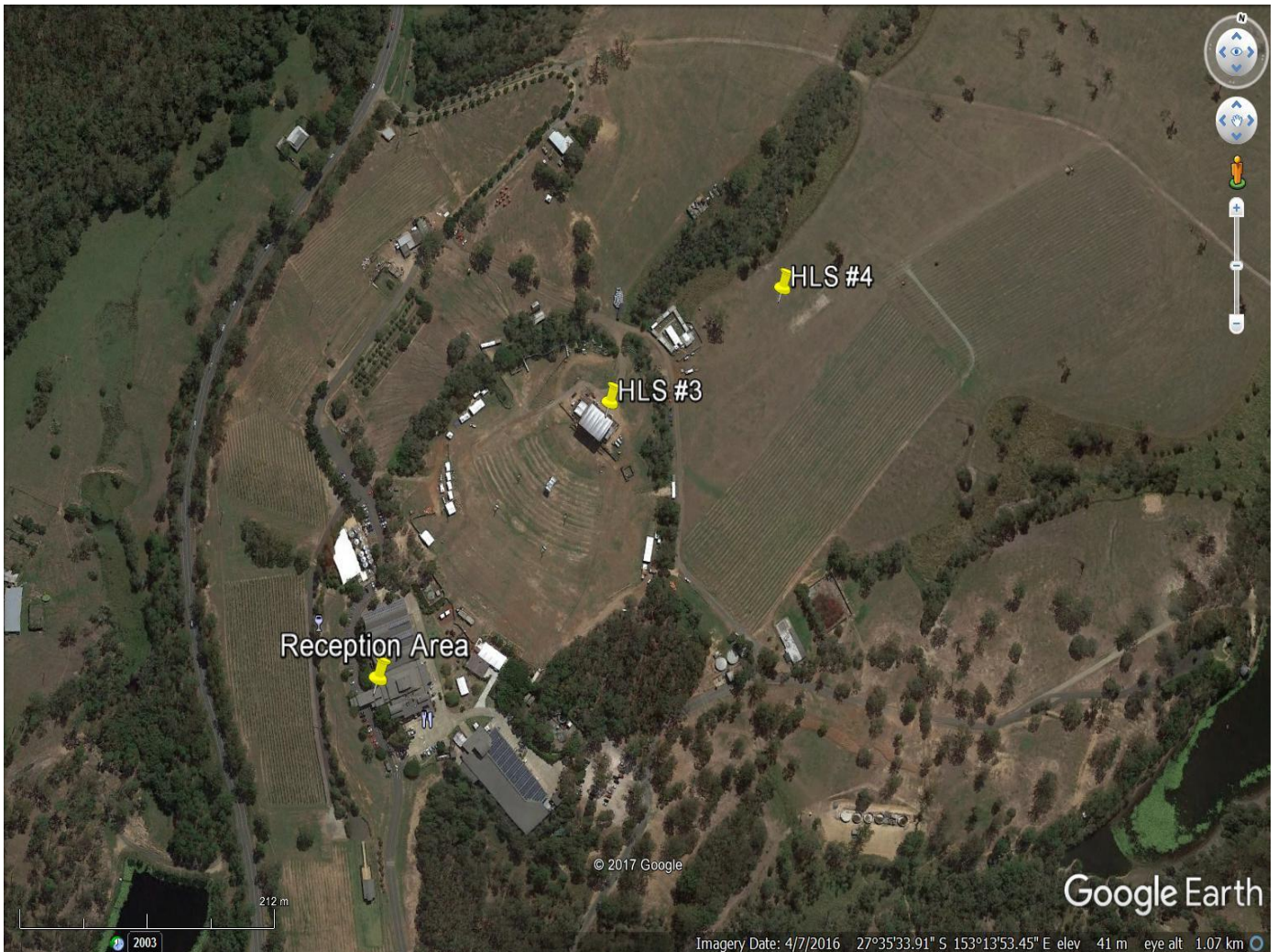
As a leader in environmental awareness, management of the winery would prefer all helicopter arrivals/departures to be conducted using noise abatement techniques to minimize the impact on our "natural quiet", our native fauna and also our neighbours.

Specific procedures required by Sirromet Winery are outlined below for Helicopters and for UAV's below Google maps picture below

<b>HLS:</b>	Sirromet Winery, Mount Cotton
<b>TYPE:</b>	Basic HLS
<b>NVFR:</b>	Not Available
<b>FUEL:</b>	None Available
<b>LOCATION:</b>	1NM NE OF MCOO (27.35.64 S 153.13.83 E)
<b>APPROACH &amp; DEPARTURE PATHS:</b>	<ul style="list-style-type: none"> <li>• NNE winds, approach from the SSE at 1000 ft, and SSE winds approach from the NNW at 1000 ft.</li> <li>• Normal prevailing wind conditions favour approach and departure from the NNW and the SE. Stronger winds will dictate another landing direction.</li> <li>• No approach is available to any pad between the 2 main buildings.</li> <li>• Wind sock is located on top of main building.</li> <li>• Must seek latest weather within 1 hr of landing and also from Sirromet when seeking approval</li> </ul>
<b>DIMENSIONS OF APPROACH AND DEPARTURE PATHS AND GROUND EFFECT AREAS:</b>	Are in excess of CAAP-92 recommended criteria for a BASIC HLS.
<b>TYPE OF SURFACE/SLOPE:</b>	<p><b>(HLS shown on map are green round dots)</b></p> <p><b>HLS #3</b> Bitumen pad approx 200m from main building.</p> <p><b>HLS #4</b> Eastern side of bitumen rd, and east of large gum tree, slight slope landing <b>2%</b></p>

<b>HAZARDS AND OBSTRUCTIONS:</b>	Main buildings. HLS #3 & #4 are in large open areas. A fly-over at 1000 ft is recommended before landing. No fly over buildings or crowds at any time
<b>RESTRICTIONS OR SPECIFIC CONDITIONS:</b>	Landing approval required – NO EXCEPTIONS. Copy of Public Liability Insurance required prior to first arrival or landing. Helicopter Rego and also Pilot and passengers numbers. Redlands local Council restricts no more than 4 take off and landings in one day. CASA is also monitoring our private HLS. No fly over neighbours houses or farm animals.
<b>OTHER:</b>	Please be aware that we may have weddings, events, functions, and large concerts that may prevents a helicopter landing, hence please use our HLS procedure to prevent any confusions, this will ensure that all parties are kept up to date with all helicopters onsite and safety. HLS will have 6 moveable signs stating “WARNING HELICOPTER LANDING SITE” to warn customer’s pre landing of choppers.
<b>CONTACT FOR APPROVAL TO USE:</b>	<a href="mailto:wines@sirromet.com">wines@sirromet.com</a>

## HLS DIAGRAM & UAV Specs



### DRONE or UAV SPEC'S

- Must have pre operating approvals
- Must have an OC license
- Must not fly near buildings within 30m
- Must not fly over crowds at anytime
- Must not exceed 120m altitude
- Must not fly over cars
- Must operate within weather conditions
- Must have a visual with UAV at all times no FPV goggles
- Must have approved signage on show at all times
- Must show OC and CC license numbers at all times with CASA approvals
- Sirromet will set operators a specific area that must not be breached